



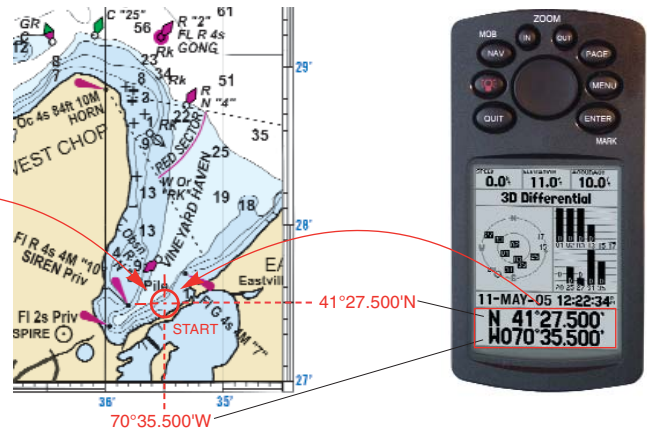
Part 1: Planning on your Chart

You are here (START)

You can use visual references to relate what you see in the real world to a chart.

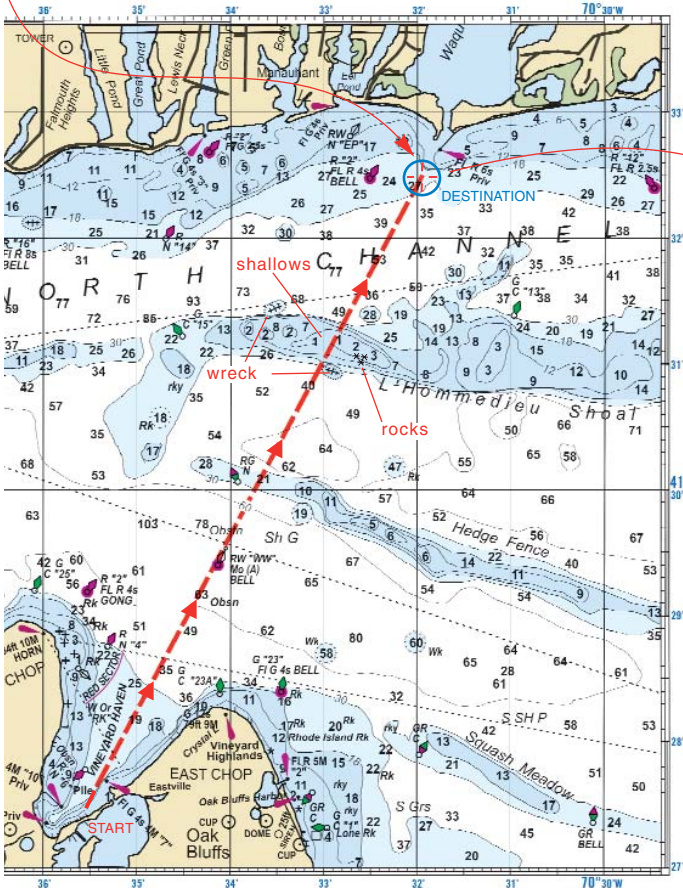


Your current coordinates are shown on your GPS. You can plot this position on your chart.

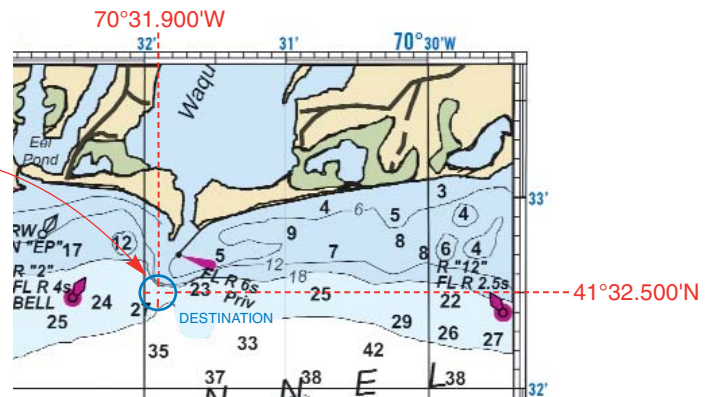


You want to go here (DESTINATION)

You can locate your intended destination on your chart.



Measure your destination's coordinates and enter them into your GPS.



What's in your way?

A straight line is the shortest distance between two points. On the surface, this path may appear safe, but if you could see under the water, you'd see potentially hazardous rocks and shallows. When you use a chart to plot your path, symbols and depths will alert you to impending dangers. You can then use the chart to plot a safe route that utilizes navigation aids along the way.

